

**ITEM 4.            ITEM FOR COMMITTEE INFORMATION – TEMPORARY ROAD  
CLOSURES – PITT STREET WATERLOO**

**TRIM RECORD NO:    2016/509319**

**RECOMMENDATION**

It is recommended that the Committee note the change of date of the temporary road closure of Pitt Street, between McEvoy and Allen Streets, Waterloo to Saturday 22 October 2016 between 6am and 6pm and the alternative date in case of inclement weather as Saturday 29 October 2016.

**VOTING MEMBERS FOR THIS ITEM**

<b><i>Voting Members</i></b>	<b><i>Support</i></b>	<b><i>Object</i></b>
City of Sydney		
Roads and Maritime Services		
NSW Police – Redfern LAC		
Representative for the Member for Heffron		

**DECISION**

**BACKGROUND**

The City has received a request to change the date for the temporary road closure of Pitt Street, between McEvoy and Allen Streets, Waterloo to Saturday 22 October 2016 between 6am and 6pm and the alternative date in case of inclement weather as Saturday 29 October 2016.

**COMMENTS**

The Committee at its meeting on 17 August 2016 endorsed the temporary closure of Pitt Street for 15 October 2016 with alternative date as 22 October 2016. The Applicant has informed that the closure was postponed on 15 October 2016 due to unforeseen circumstances.

Agreement has been obtained from the Roads and Maritime Services, Transport Management Centre and the Police for the new closure date and the alternative date to occur prior to the LPCTCC meeting.

**CONSULTATION**

The Applicant is required to notify affected stakeholders as stipulated in Schedule C.

**FINANCIAL**

All costs associated with the proposed closures will be borne by the Applicant.

**ATTACHMENTS**

Item for Committee Information – Temporary Road Closures – Pitt Street Waterloo

Ajay Nayyar, Traffic Works Coordinator

Client: Uno Constructions


Location: McEvoy St Waterloo

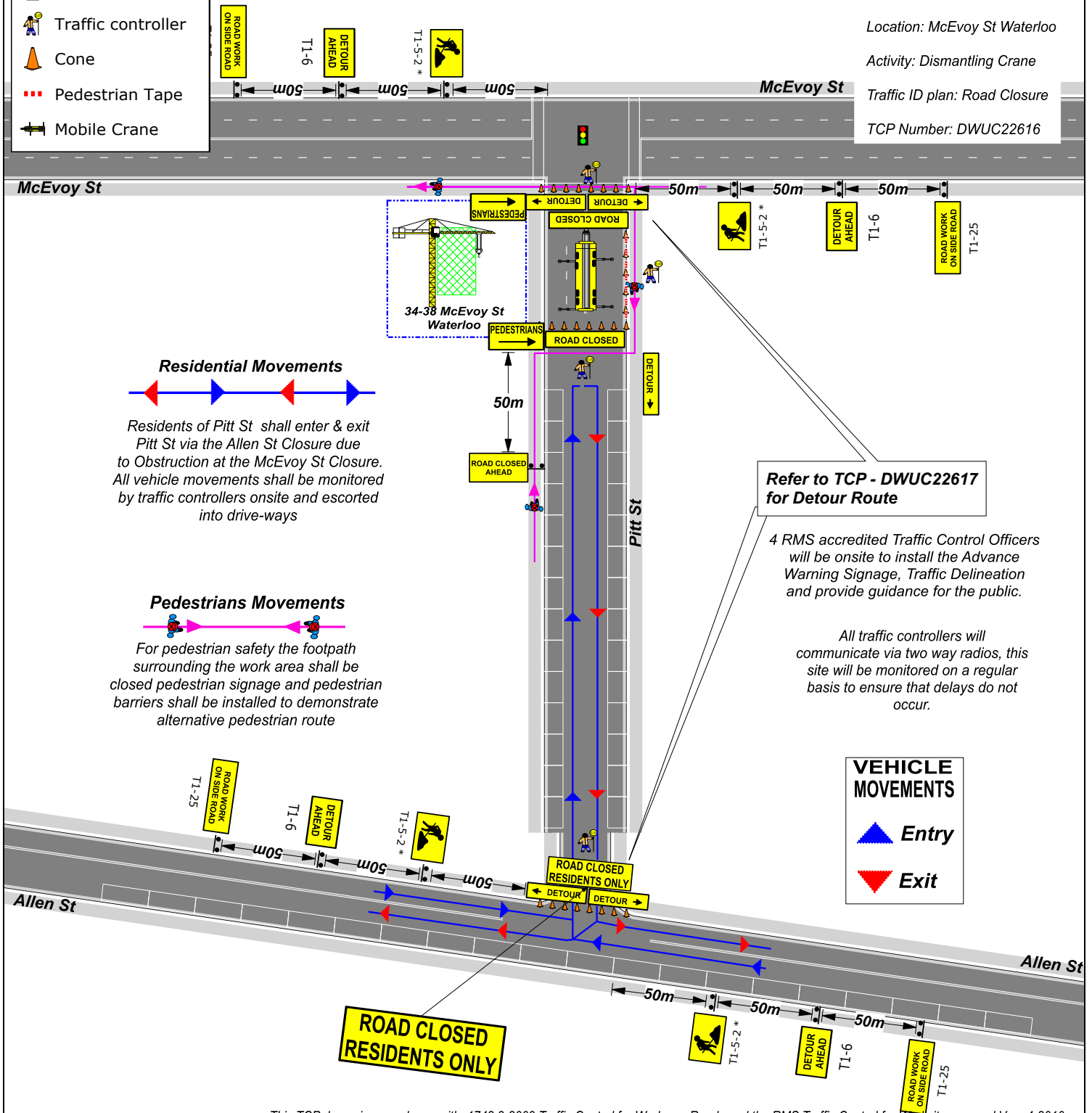
Activity: Dismantling Crane

Traffic ID plan: Road Closure

TCP Number: DWUC22616

### Legend

-  Work Area
-  traffic light
-  Traffic controller
-  Cone
-  Pedestrian Tape
-  Mobile Crane



#### Residential Movements



Residents of Pitt St shall enter & exit Pitt St via the Allen St Closure due to Obstruction at the McEvoy St Closure. All vehicle movements shall be monitored by traffic controllers onsite and escorted into drive-ways

#### Pedestrians Movements



For pedestrian safety the footpath surrounding the work area shall be closed pedestrian signage and pedestrian barriers shall be installed to demonstrate alternative pedestrian route

**Refer to TCP - DWUC22617 for Detour Route**

4 RMS accredited Traffic Control Officers will be onsite to install the Advance Warning Signage, Traffic Delineation and provide guidance for the public.

All traffic controllers will communicate via two way radios, this site will be monitored on a regular basis to ensure that delays do not occur.

#### VEHICLE MOVEMENTS

-  Entry
-  Exit

Modified By:.....  
 Date Modified:.....  
 Select/Modify Ticket:.....  
 Expiry Date:.....  
 Signature:.....

This TCP drawn in accordance with 1742.3-2009 Traffic Control for Works on Roads and the RMS Traffic Control for Worksites manual Vers 4-2010.

Date: 22.6.16 Author: Adam Spilsted Project: Uno Constructions  
 Qualification: Inspect & Design Ticket Number: 2893015920 Exp Date: 13.12.16

#### Comments:

One RMS accredited Apply Traffic Plans (yellow card) holder shall install the scenario according to this TCP. All sign spacings and taper lengths must also be in accordance with TCW manual V4 and relevant SWMS any changes made must be recorded and shown on this TCP by an accredited Select & Modify (Red Card) holder. Prior to implementing this scenario all staff must have signed onto the relevant SWMS and conducted Pre-start.

(02) 9603 38 20

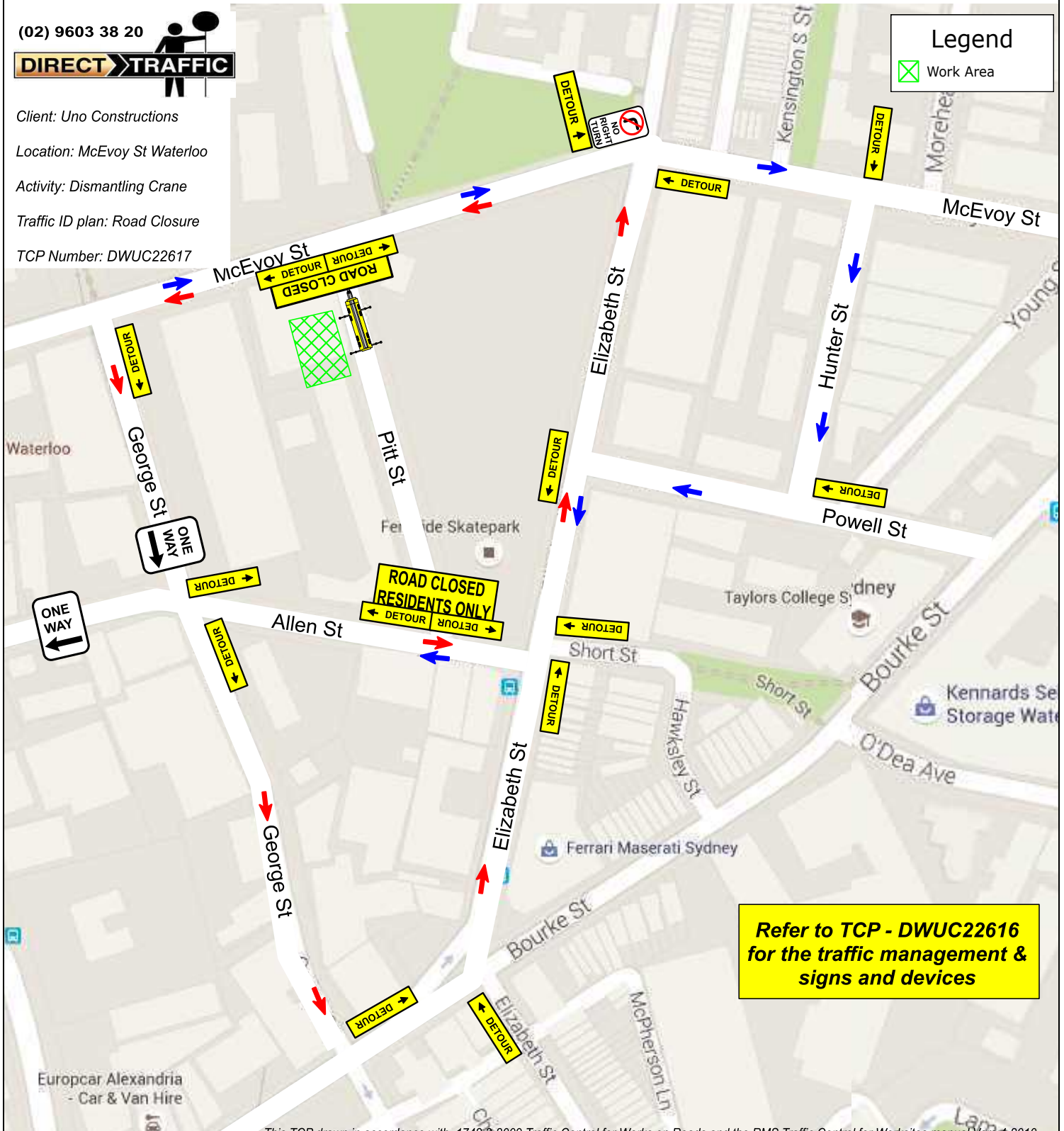
**DIRECT TRAFFIC**



Client: Uno Constructions  
Location: McEvoy St Waterloo  
Activity: Dismantling Crane  
Traffic ID plan: Road Closure  
TCP Number: DWUC22617

**Legend**

Work Area



**Refer to TCP - DWUC22616 for the traffic management & signs and devices**

Modified By:.....  
Date Modified:.....  
Select/Modify Ticket:.....  
Expiry Date:.....  
Signature:.....

This TCP drawn in accordance with 1742.3-2009 Traffic Control for Works on Roads and the RMS Traffic Control for Worksites manual Vers 4-2010.

<p><b>Date:</b> 22.6.16 <b>Author:</b> Adam Spilsted <b>Project:</b> Uno Constructions  <b>Qualification:</b> Inspect &amp; Design <b>Ticket Number:</b> 2893015920 <b>Exp Date:</b> 13.12.16</p>	<p>(02) 9603 38 20  <b>DIRECT TRAFFIC</b></p>	
<p><b>Comments:</b>          One RMS accredited Apply Traffic Plans ( yellow card ) holder shall install the scenario according to this TCP. All sign spacings and taper lengths must also be in accordance with TCW manual V4 and relevant SWMS any changes made must be recorded and shown on this TCP by an accredited Select &amp; Modify (Red Card) holder. Prior to implementing this scenario all staff must have signed onto the relevant SWMS and conducted Pre-start.</p>	<p>Design &amp; Inspect Traffic Control Plans  <small>cert no. 2893015920</small></p> <p>NSW Transport Roads &amp; Maritime Services</p> <p>ADAM SPILSTED          Expiry Date: 13/12/2016</p>	<p><b>NOT TO SCALE</b></p>

Direct Traffic Pty Ltd (DT) accepts no liability for the implementation or execution of this TCP unless implemented by an Authorized DT employee. This TCP is a copyright, property of DT and are not transferable unless permission is granted by DT. This TCP remains property of DT. This TCP has been generated to comply with AS:1742.3 2009 and the RTA TCWSM 2010 V.4